

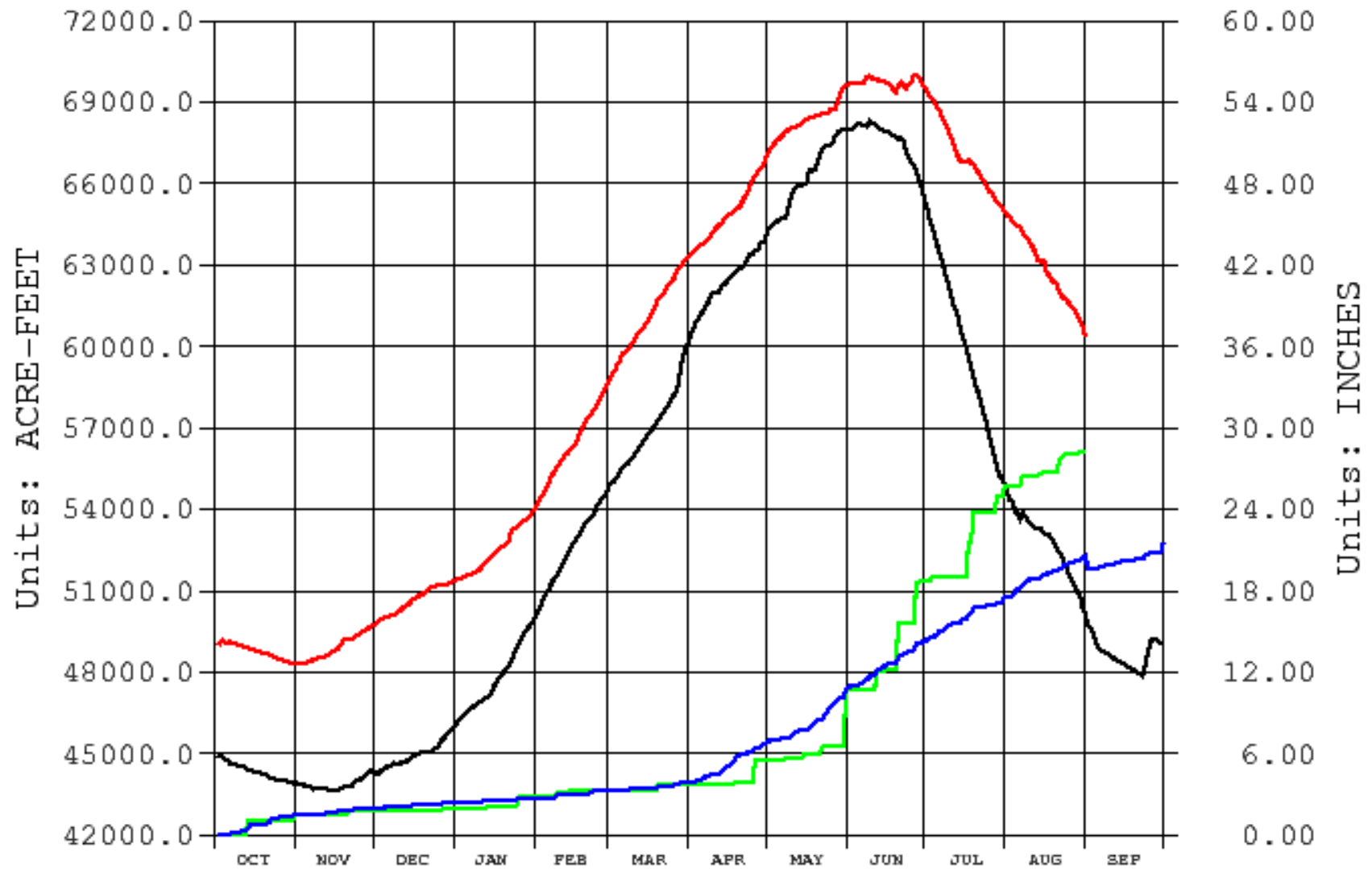
Frenchman Cambridge 2018 Storage Water Supply

Reservoir Content / Irrigation Supply

Reservoirs 2018	Swanson		Hugh Butler		Harry Strunk		Total AF
	Elevation	Acre-Feet	Elevation	Acre-Feet	Elevation	Acre-Feet	AF
Top of Irrigation Pool	2752.00	110,175	2581.80	36,224	2366.10	34,647	181,046
FCID Contracted Shut Off Elevation/Content AF	2725.00	18,958	2561.00	11,212	2343.00	7,897	38,067
<i>FCID Contracted Irrigation Pool Capacity at 100% Full</i>	27.00	91,217	20.80	25,012	23.10	26,750	142,979
Elevation / Content in AF	2740.04	60,405	2568.84	18614	2362.27	28,288	107,307
% of Full Capacity	54.8%		51.4%		81.6%		59.3%
Current 2018 Irrigation Supply	Feet	A.F.	Feet	A.F.	Feet	A.F.	A.F.
	15.04	41,447	7.84	7,402	19.27	20,391	69,240
Friday, August 31, 2018	% Irr. Pool	45.4%	% Irr. Pool	29.6%	% Irr. Pool	76.2%	48.4%
Aug 31, 2017 (AF / Elev)	2,736.98	50,189	2,565.00	14,726	2,353.10	16,708	81,623
One Year Change in Storage (AF / Elevation)	3.06	10,216	3.84	3,888	9.17	11,580	25,684

Archive Data From 1 OCT Through 30 SEP

Plotted 08/31/2018 08:45

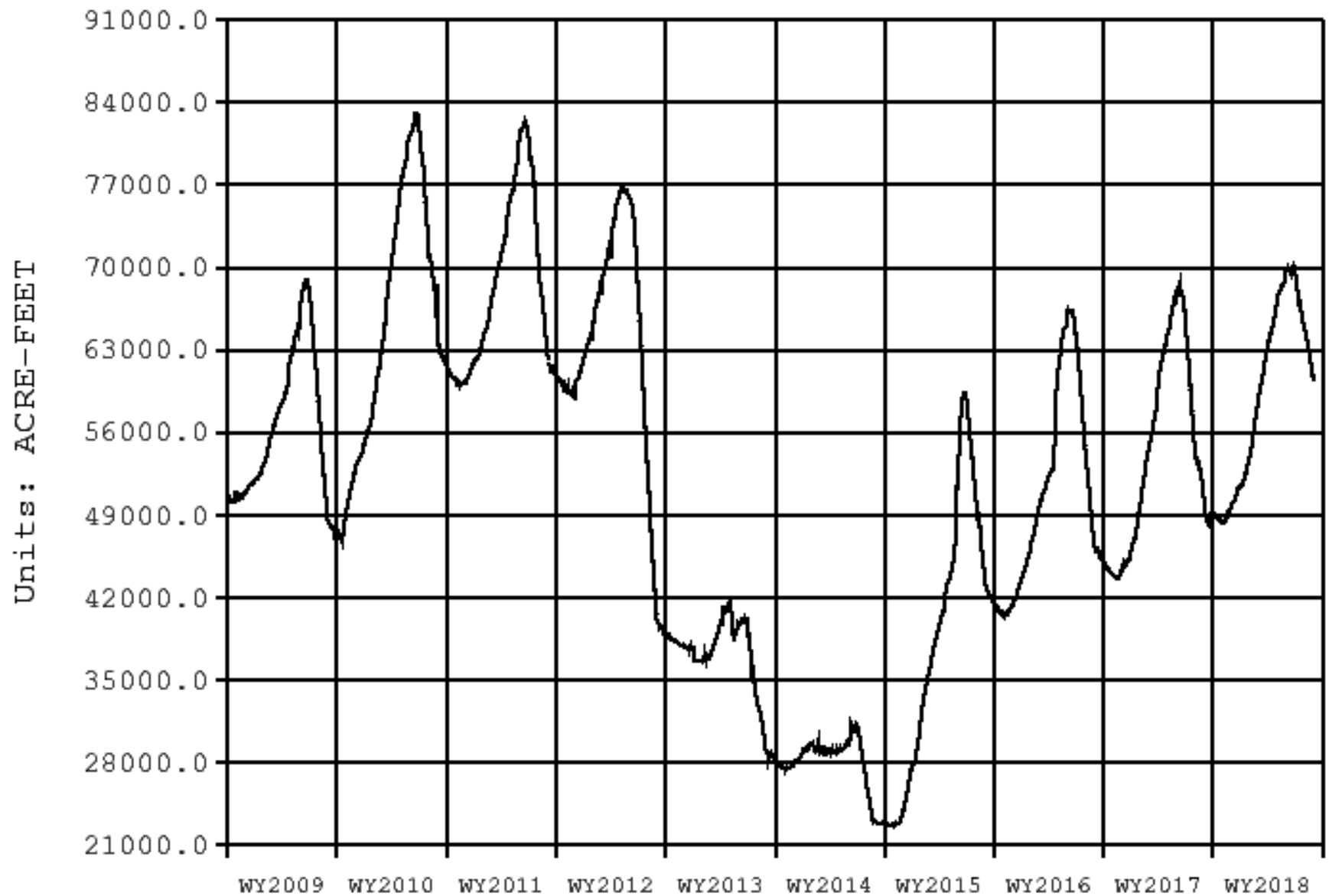


TRNE Swanson Lake (Trenton Dam), NE
— AF Reservoir Storage Content (acre-feet)
— PP Cumulative Total Precip. (inches)
— PP 10yr avg Cumulative Total Precip. (inches)

2017 2018
2018
2018

Archive data From 1-OCT-2008 Through 30-SEP-2018

Plotted 08/31/2018 10:07



TRNE

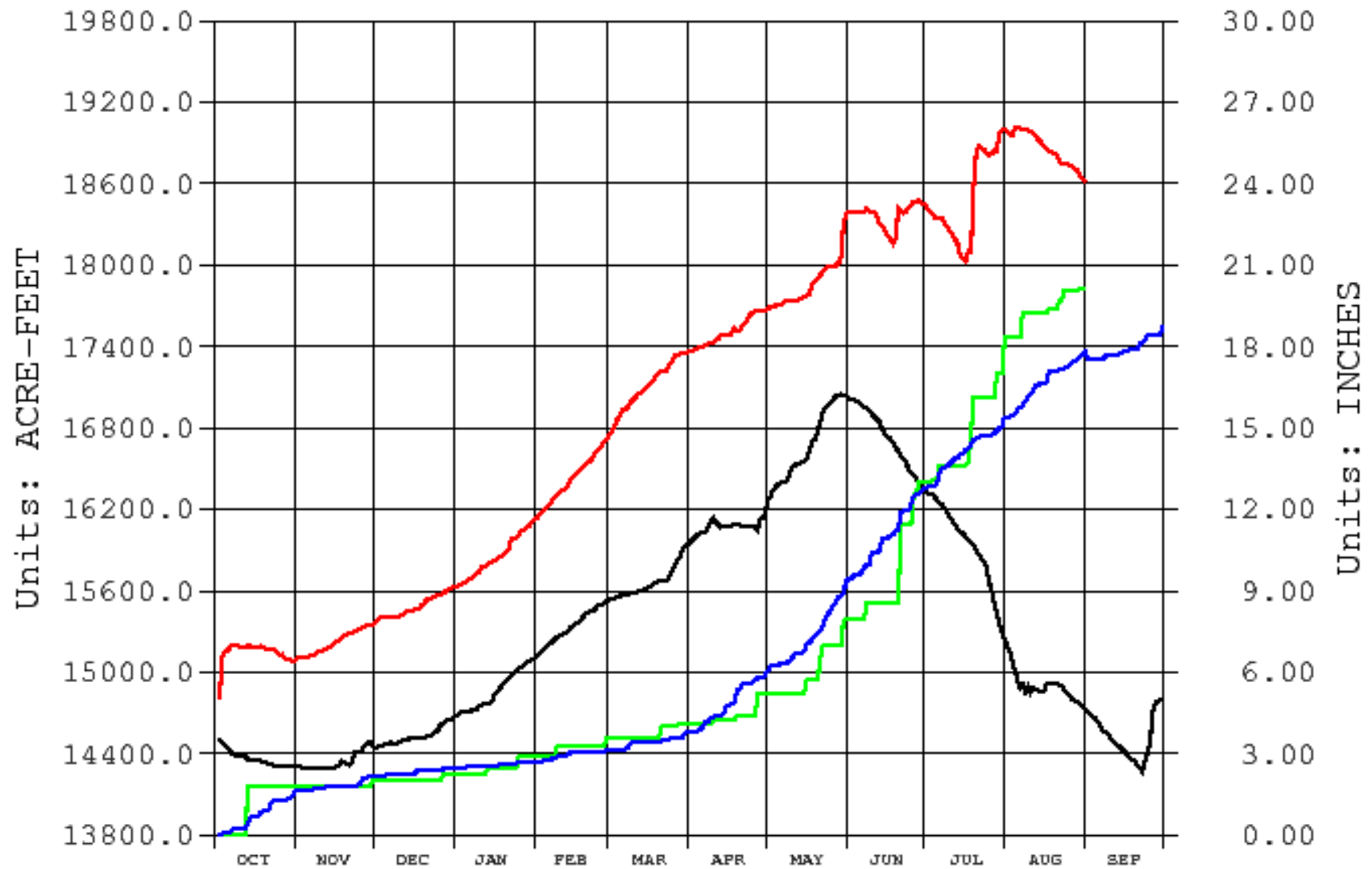
Swanson Lake (Trenton Dam), NE

____ AF

Reservoir Storage Content (acre-feet)

Archive Data From 1 OCT Through 30 SEP

Plotted 08/31/2018 08:50

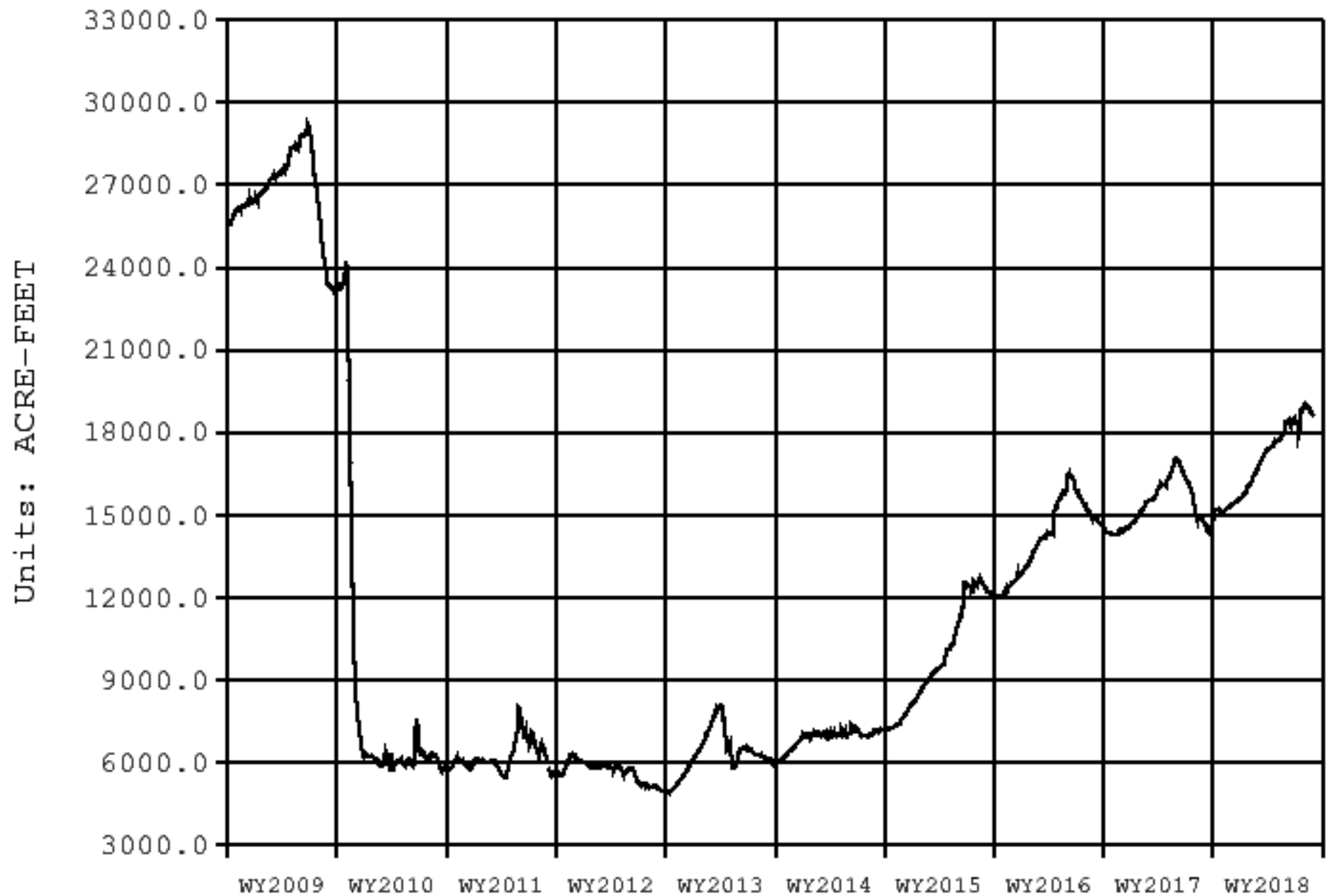


HBNE Hugh Butler Lake (Red Willow Dam), NE
— AF Reservoir Storage Content (acre-feet)
— PP Cumulative Total Precip. (inches)
— PP 10yr avg Cumulative Total Precip. (inches)

2017 2018
2018
2018

Archive data From 1-OCT-2008 Through 30-SEP-2018

Plotted 08/31/2018 10:09



HBNE

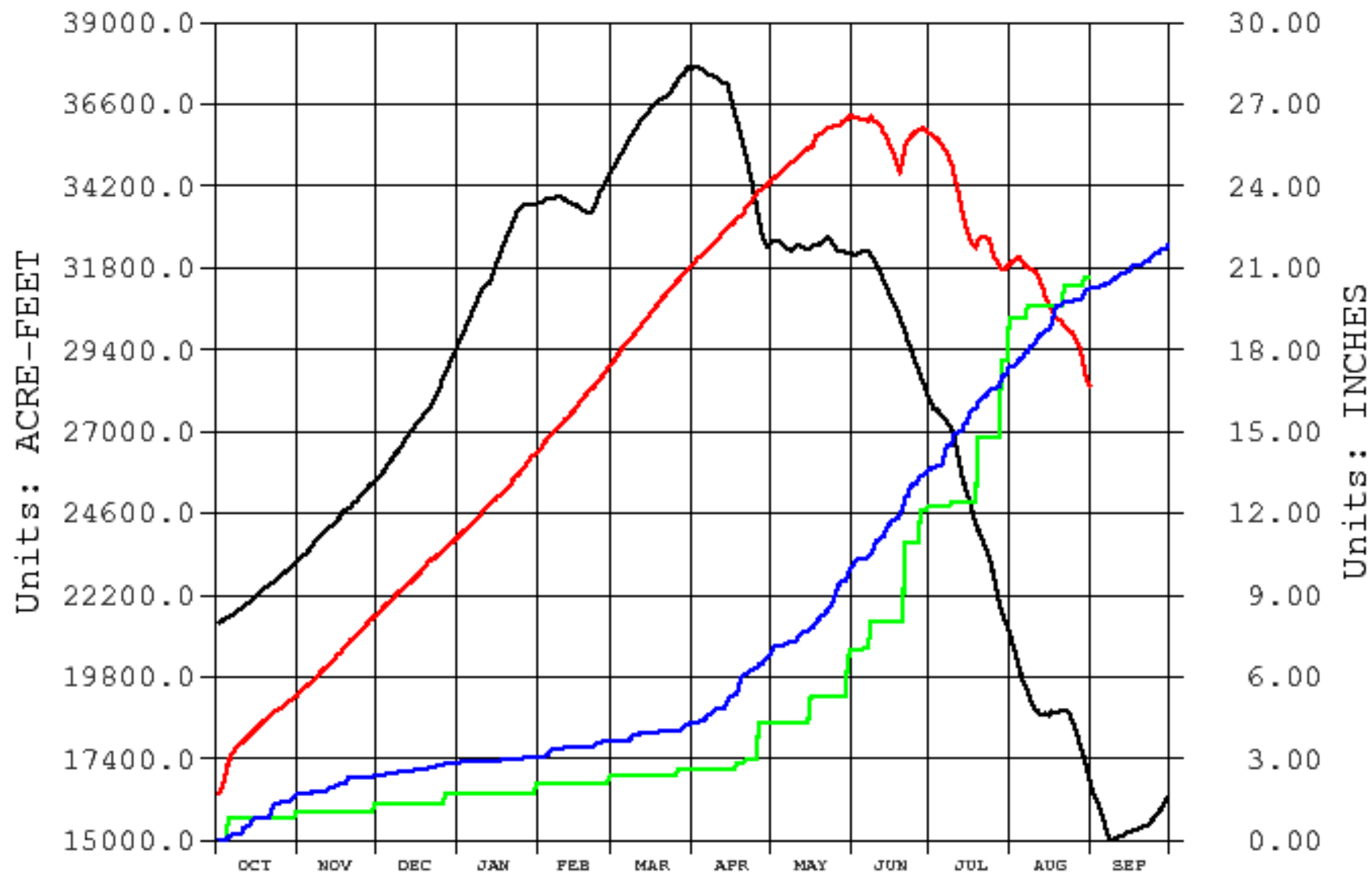
Hugh Butler Lake (Red Willow Dam), NE

AF

Reservoir Storage Content (acre-feet)

Archive Data From 1 OCT Through 30 SEP

Plotted 08/31/2018 08:51

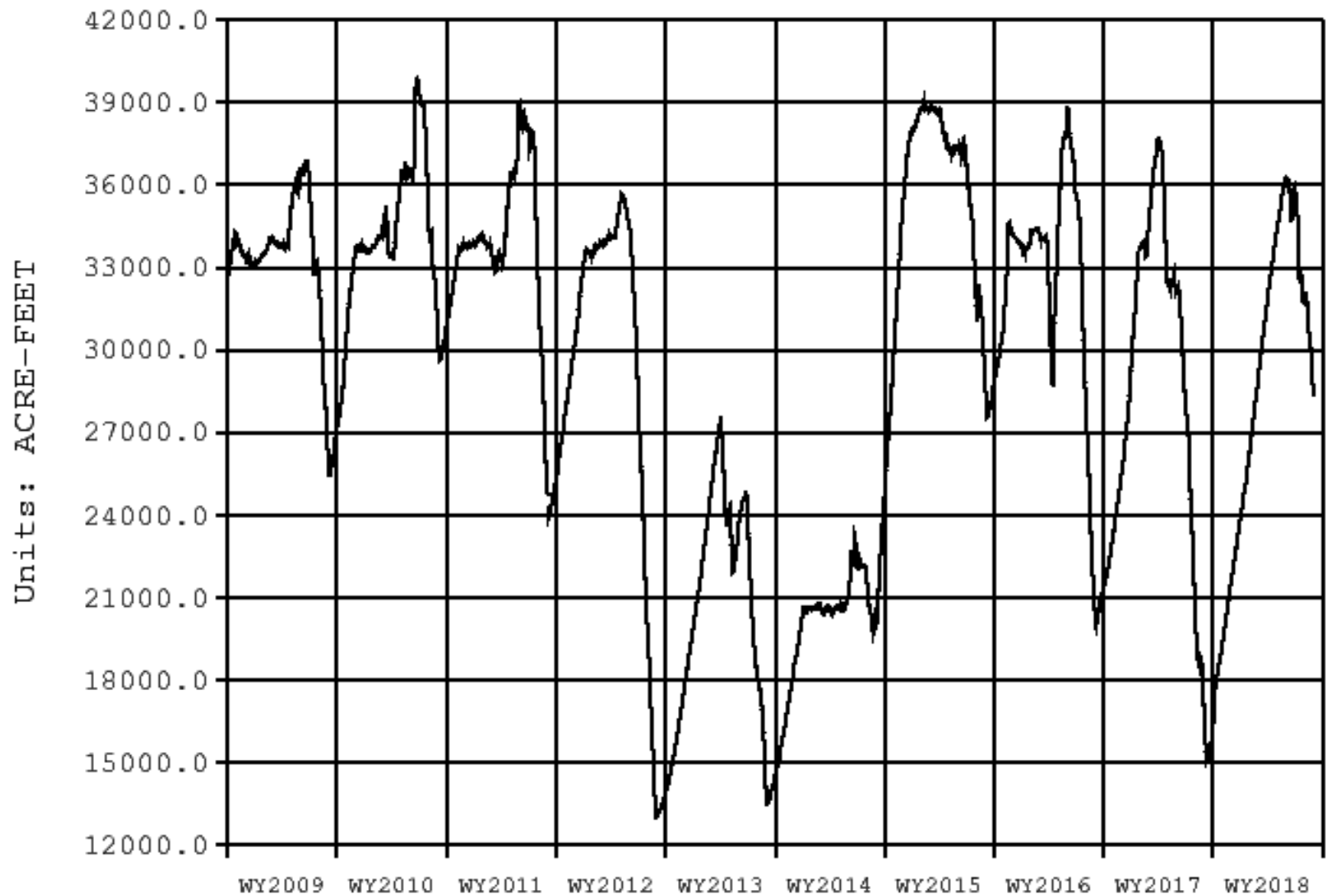


HSNE Harry Strunk Lake (Medicine Creek), NE
— AF Reservoir Storage Content (acre-feet)
— PP Cumulative Total Precip. (inches)
— PP 10yr avg Cumulative Total Precip. (inches)

2017 2018
2018
2018

Archive data From 1-OCT-2008 Through 30-SEP-2018

Plotted 08/31/2018 10:08



HSNE

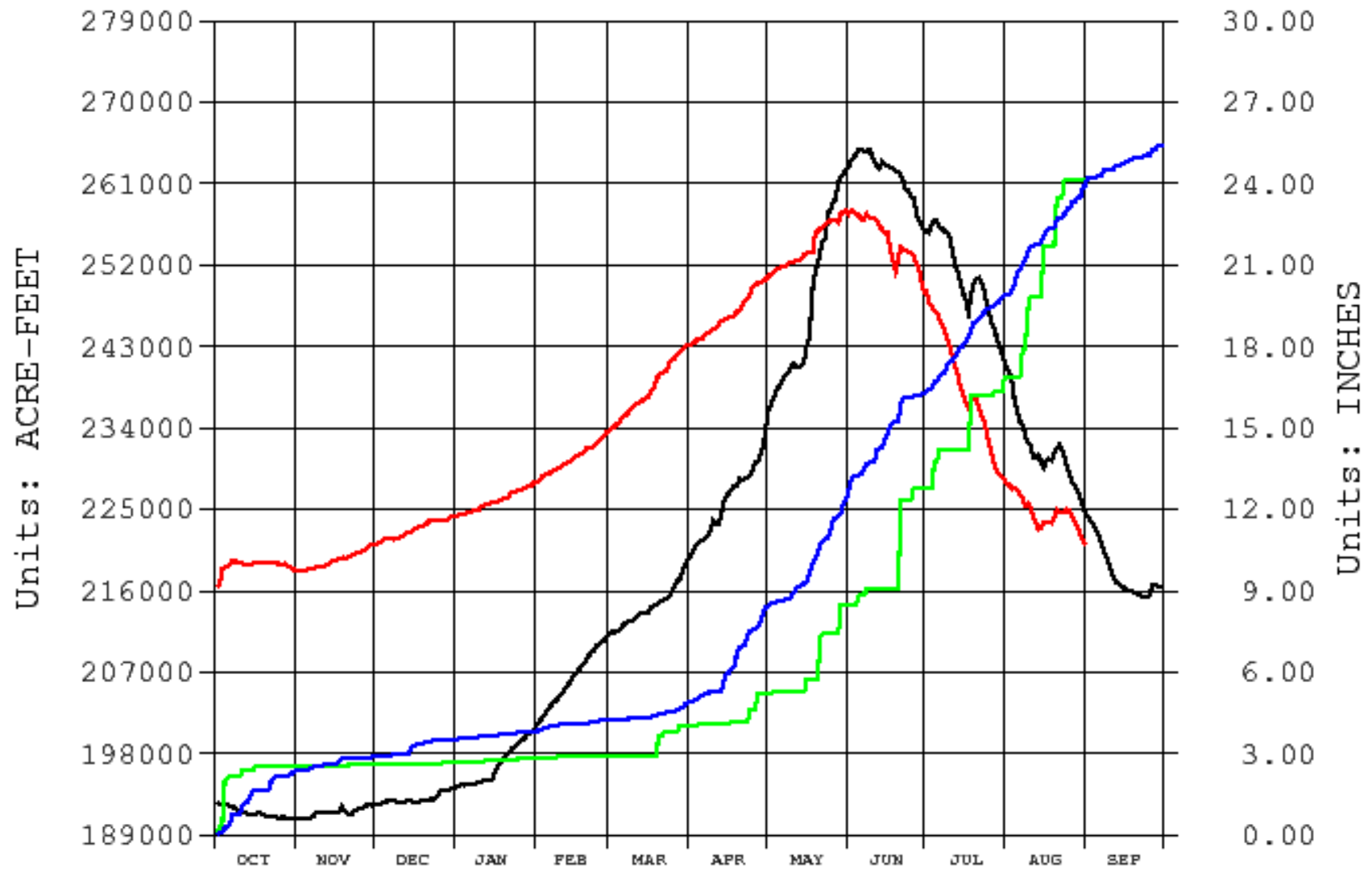
Harry Strunk Lake (Medicine Creek), NE

_____ AF

Reservoir Storage Content (acre-feet)

Archive Data From 1 OCT Through 30 SEP

Plotted 08/31/2018 08:56

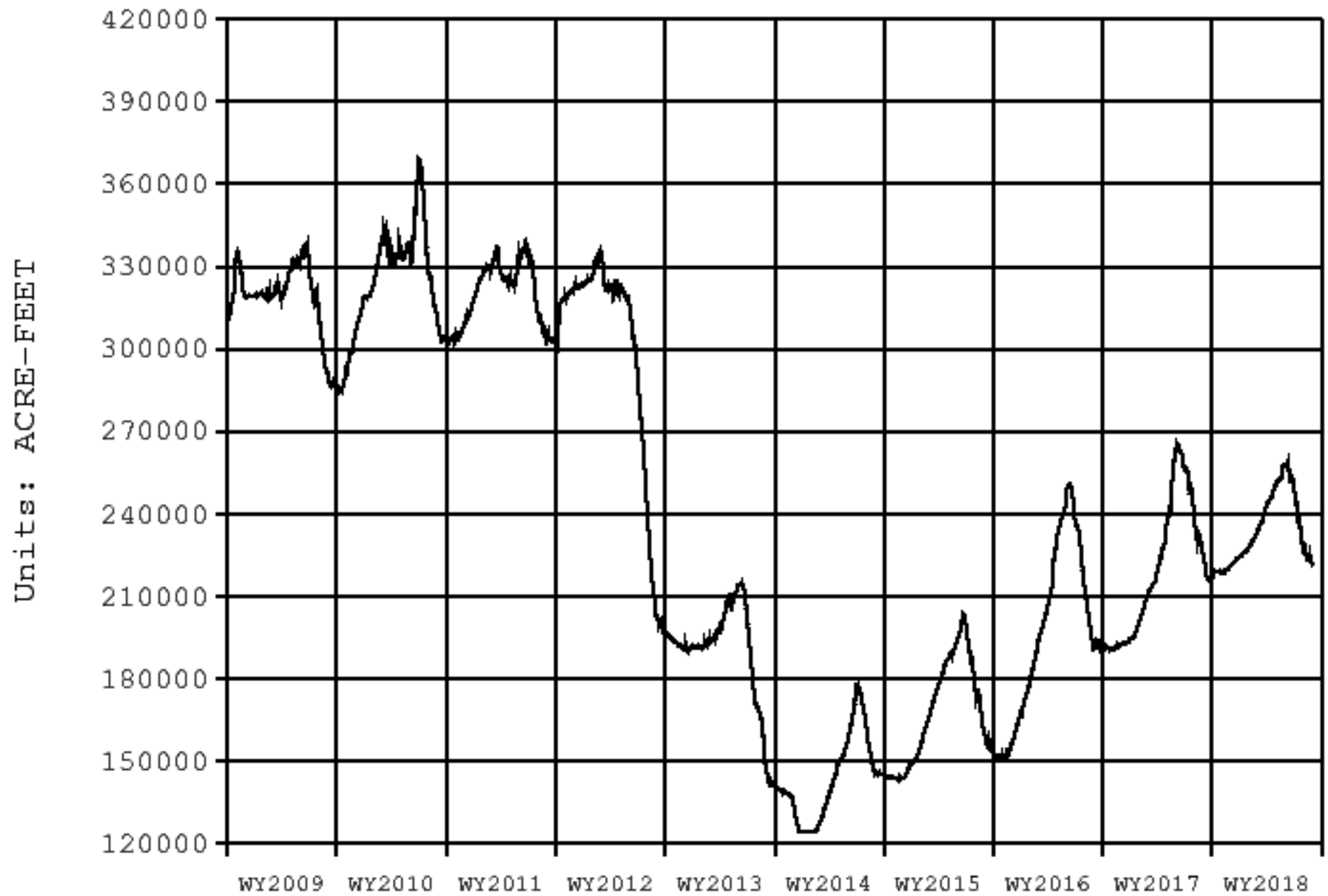


HCNE Harlan County Dam, NE
— AF Reservoir Storage Content (acre-feet)
— PP Cumulative Total Precip. (inches)
— PP 10yr avg Cumulative Total Precip. (inches)

2017 2018
2018
2018

Archive data From 1-OCT-2008 Through 30-SEP-2018

Plotted 08/31/2018 10:10



HCNE

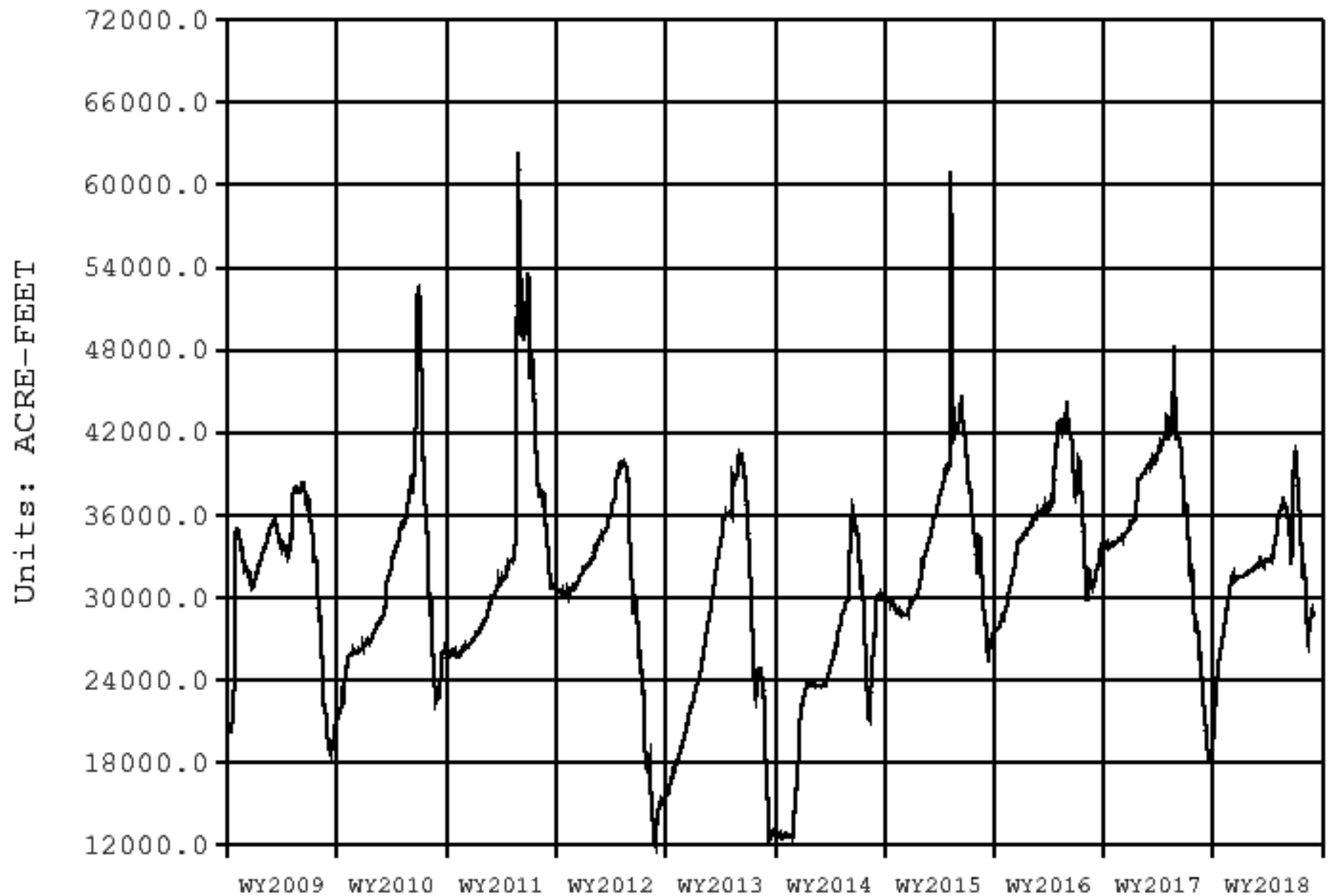
Harlan County Dam, NE

AF

Reservoir Storage Content (acre-feet)

Archive data From 1-OCT-2008 Through 30-SEP-2018

Plotted 08/31/2018 10:12



LVKS

Lovewell Dam, KS

_____ AF

Reservoir Storage Content (acre-feet)